

Welcome Pack Waterford ETNS

Back to School 2025-2026

Welcome!

Dear Parents, Guardians and Pupils,

I wish to extend a very warm welcome to your family as you join our school community. All the members of our team sincerely hope that you will find Waterford Educate Together National School to be a very inviting place and that your child will spend many happy years with us.

In our school we always promote open respectful communication.

We will always act in the best interests of the children in our school to help ensure they reach their full potential. In our school we hold the following values to the core of everything we do:

“Be kind, Be Safe, Be Honest, Be Ready to Learn”

These values are expected from all members of the school community including staff, pupils, parents and guardians. We have put some information together in the following pages which we hope will be of help to you while settling into our school.

Yours sincerely,

Patrick Pender

Principal

Waterford Educate Together National School



Our School and Ethos

About Educate Together

Waterford Educate Together National School is part of the Educate Together network, which ensures equality of access and esteem for all children. Guided by principles of being child-centred, inclusive, and democratically run, our school fosters a safe, supportive environment where every child's identity is respected, and their voice is heard.



Educate
Together

For more information, visit the [Educate Together website](https://www.educatetogether.ie).



Information for parents - Educate Together

Educate Together is the patron body of the growing network of equality-based primary and second-level schools in Ireland

[educatetogether.ie](https://www.educatetogether.ie)

Important Dates

Please see below our provisional school calendar for the year. We have tried to include everything on the calendar however from time to time additional events and school closures may arise. Any changes will be clearly communicated at the earliest possible time.

The full school calendar is available through Aladdin Connect. Please see App for full details, video below shows how to access the calendar through Aladdin.

2025 - 2026 School Calendar

August '25							September '25							October '25						
Su	M	Tu	W	Th	F	S	Su	M	Tu	W	Th	F	S	Su	M	Tu	W	Th	F	S
					1	2		1	2	3	4	5	6				1	2	3	4
3	4	5	6	7	8	9	7	8	9	10	11	12	13	5	6	7	8	9	10	11
10	11	12	13	14	15	16	14	15	16	17	18	19	20	12	13	14	15	16	17	18
17	18	19	20	21	22	23	21	22	23	24	25	26	27	19	20	21	22	23	24	25
24	25	26	27	28	29	30	28	29	30					26	27	28	29	30	31	
31																				

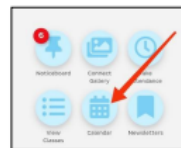
November '25							December '25							January '26						
Su	M	Tu	W	Th	F	S	Su	M	Tu	W	Th	F	S	Su	M	Tu	W	Th	F	S
						1		1	2	3	4	5	6				1	2	3	
2	3	4	5	6	7	8	7	8	9	10	11	12	13	4	5	6	7	8	9	10
9	10	11	12	13	14	15	14	15	16	17	18	19	20	11	12	13	14	15	16	17
16	17	18	19	20	21	22	21	22	23	24	25	26	27	18	19	20	21	22	23	24
23	24	25	26	27	28	29	28	29	30	31				25	26	27	28	29	30	31
30																				

February '26							March '26							April '26							
Su	M	Tu	W	Th	F	S	Su	M	Tu	W	Th	F	S	Su	M	Tu	W	Th	F	S	
						1		1	2	3	4	5	6	7				1	2	3	4
8	9	10	11	12	13	14	8	9	10	11	12	13	14	5	6	7	8	9	10	11	
15	16	17	18	19	20	21	15	16	17	18	19	20	21	12	13	14	15	16	17	18	
22	23	24	25	26	27	28	22	23	24	25	26	27	28	19	20	21	22	23	24	25	
							29	30	31					26	27	28	29	30			

May '26							June '26							July '26							
Su	M	Tu	W	Th	F	S	Su	M	Tu	W	Th	F	S	Su	M	Tu	W	Th	F	S	
						1	2		1	2	3	4	5	6				1	2	3	4
3	4	5	6	7	8	9	7	8	9	10	11	12	13	5	6	7	8	9	10	11	
10	11	12	13	14	15	16	14	15	16	17	18	19	20	12	13	14	15	16	17	18	
17	18	19	20	21	22	23	21	22	23	24	25	26	27	19	20	21	22	23	24	25	
24	25	26	27	28	29	30	28	29	30					26	27	28	29	30	31		
31																					

School Closed/ Holidays
First Day of School
Half Day

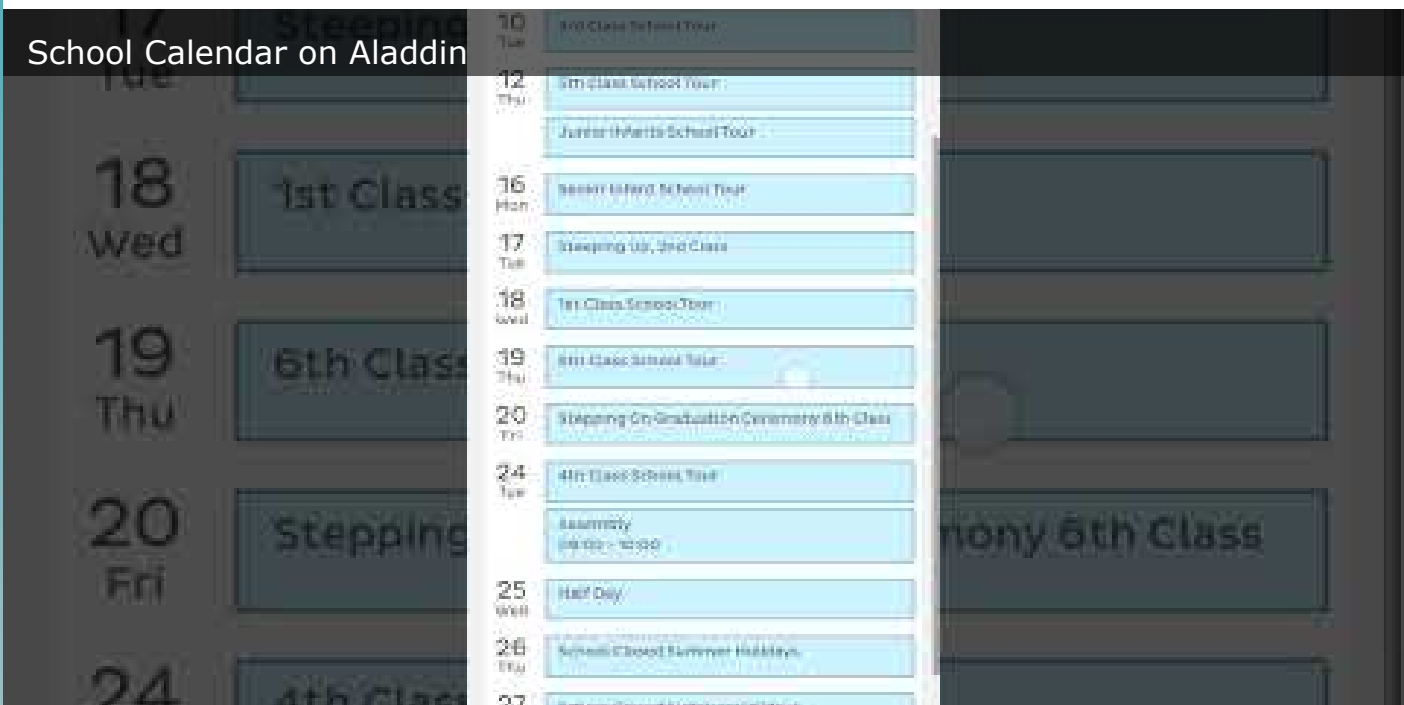
Please see the school calendar on Aladdin Connect for full details of events, holidays etc.



2025.2026 Calendar Final.pdf

Download
167.0 KB

School Calendar on Aladdin

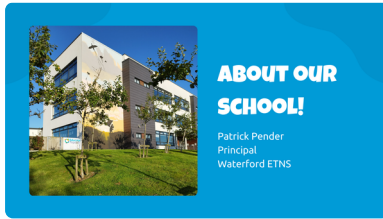


Our Staff and Our School

Our Staff

Our Staff

A list of all our staff members can be seen by clicking on the photo!



Our School

More information about our school can be found by clicking on the picture below.



Positive Behaviour

Our school is a restorative practice school. This means that we strive to build positive relationships, working to solve conflict together. Our staff have undergone training in restorative practice and promoting positive behaviour. We are currently building this into our daily practice as part of our Code of behaviour. This approach to living and learning ensures that our school is inclusive, calm, and built on a strong sense of responsibility and community.

Communication

Here at Waterford ETNS we appreciate the importance of clear, respectful communication between all members of our school community. To help ensure this happens we would ask that everyone please makes themselves aware of the following points:



Aladdin Connect

Please download and sign up for Aladdin Connect. This is our primary communication tool.

In addition to its noticeboard feature parents can easily update absence reasons, adjust contact/ personal information and make online payments for school related fees, trips etc.

All communication with your child's class teacher must be done directly through Aladdin Connect. Further details are below.



Our Office

Should you need to contact the office please email:

admin@wetns.ie

Should you wish to contact our school principal please email:

principal@wetns.ie

Office Opening Hours:

8.50 - 10:20

10:40 - 12:20

12:20 - 2:40

(Please note: communication should always be in the first instance with your child's class teacher. They will be best positioned to assist with any query or offer advice where needed.)

Parental Complaints Procedures

Please see below the revised parental complaints procedure agreed by the INTO, Educate Together and all management bodies of primary schools. It is designed to provide an open and clearly defined process to facilitate parents/legal guardians in raising concerns about their own child/children in an agreed, fair and transparent manner, with a view to seeking an early resolution of the issue. The purpose of the revised procedure is for parents and legal guardians to engage constructively with schools where a concern arises and to have it addressed at local level in an efficient manner, in the best interests of all parties.

Please note that as per our own existing procedures first contact should always be with your own child's class teacher and the decision of the Board of Management is final.



Parental-Complaints-Procedure.pdf

[Download](#)

181.6 KB

Aladdin Connect

Waterford Educate Together National School uses **Aladdin Connect** to keep parents informed and engaged in their child's education. It is essential that you download the app and monitor regularly.

Key Features:

- Access attendance, test results, reports, and homework details.
- Receive school and classroom updates.
- Book parent-teacher meeting slots.
- Communicate directly with your child's teacher via the app.
- Make secure online payments for school activities using **Aladdin ePayments**.

Payments Made Easy:

-
- Cash payments are not accepted in the office and all payments are through the app..
- Pay securely for all children in one transaction using a unique payment link.
- Receive an email receipt with a reference number for your records.


Benefits:

- Improved attendance tracking.
- Reduced paper and communication costs.
- Secure, efficient messaging with teachers and the school.

Getting Started:

1. Look out for your unique registration link (via email or text).
2. Follow the setup instructions provided in the attached document.
3. Download the **Aladdin Connect App** for instant updates.
4. Watch the video on how to message your child's teacher.

Ensure your contact details are up to date and enjoy seamless communication with our school community.

 **Parent signup for Connect.pdf** [Download](#)
756.0 KB



Drop Off and Collection

Traffic Management Arrangements

It is vital that all members of the school community read and adhere to the school traffic plan outlined below:



Traffic Management Plan Update

Traffic Management Plan Update - Please see important updates to our traffic management plan. by Waterford ETNS | This newsletter was created with Smore, an online tool for creating beautiful newsletters for individual educators, schools and districts

secure.smore.com

School Drop-Offs

Students in our **Mainstream Classes** will begin school at **8:50am** each day. Pupils in our **Hub Class** will begin at **9:00am**. The Junior Infant timetable for drop-off and collection in September has been communicated separately to those parents.

Morning supervision begins at 8:40am.

Children **should not arrive or be left unsupervised on school property before 8:40am**, as no supervision is provided earlier. The Board of Management does not accept responsibility for pupils on the school property before this time.

From **September**, the following procedures will apply:

- The **rear pedestrian gates will remain closed** in the mornings.
- The **front doors of the school open at 8:40am**.
- All children enter through the **front entrance** only.

Arrival Procedures:

- **Junior and Senior Infants:** go directly to their classrooms on arrival.
- **1st to 6th Classes:** enter through the front door and proceed to their usual line-up positions on the yard (staff supervised).
- On **wet mornings**, all pupils will go straight to their classrooms.

Parent Access:

Parents/guardians will drop children at the **front door**. Parents do not enter the school building during morning drop-off. Parents are welcome to wait and chat outside the front gates.

Breakfast Club:

A **Breakfast Club (SHERPA Kids)** will be available from **8:00am** starting in September for families requiring an earlier drop-off option.

School Collection

School collection times:

Junior & Senior Infants – 1:30pm

1st to 6th Classes – 2:30pm.

(Junior Infant September timetable has been provided separately.)

To help reduce congestion and improve safety at collection time, please follow these arrangements:

- **Hub pupils** (Junior Hub with M. Rebecca, Senior Hub with M. Jenny) – collect at Hub entrance gate.
- **Junior & Senior Infants, 1st, 2nd, 3rd Classes** – collect at front entrance.

- **4th, 5th, 6th Classes** – collect at rear entrance (metal gate).

At collection:

- **Junior Infants, Senior Infants and 1st Class** pupils will be **handed directly to a known adult**.
- **2nd to 6th Classes** will be excused at **2:30pm** to meet their parent/guardian or make their own way home (walk, cycle, public transport etc.).

Additional reminders:

- The school car park is for staff only – please do not park inside.
- Please respect the designated parking areas on **Paráid na bPáistí slip road**.
- At the rear entrance, please remain **outside the metal gate** at collection time.
- If collecting siblings from different exits, we recommend collecting the **youngest child first**.
- Where possible, pupils are encouraged to **walk or cycle** to and from school.

Health and Safety



School Starts at 8.50am

School begins at 8.50am. Supervision is provided in the playground from 8.40am.

Children should not be on the school premises before 8.40am.



Safe Parking

Please observe the rules of the road and parking restrictions that are in place. These are there to provide a safe environment for everyone. If they are ignored, there is an increased risk of an accident occurring.

1. Please do not double park in any area surrounding our school which can result in blocking in other cars during drop off or collection.
2. Please do not park on the footpath. Children are taught the pavement is a safe place to be. Blocking the footpath, even if only half of it, makes it difficult for those who do want to walk, especially for parents walking with buggies.
3. Do not park on the zig zag lines or double yellow lines so that important areas (e.g. at the pedestrian crossing) are completely clear of parked cars. This will increase visibility for pedestrians and approaching cars so that each can easily see each other.
4. All roads surrounding our school are public roads. The rules of the road apply and fines will be enforced by members of An Garda Síochána



Active Travel

Where possible we would encourage people to walk, cycle or scoot to school. Or if the car must be used, park a short distance from the school and walk the rest of the way. This will help to reduce traffic around the school making it safer for everyone. It will also help keep children (and adults) fit and healthy. We are very fortunate to have two bike sheds to the rear of the school where children can safely lock up their bikes and scooters.

With the new improvements to the roads surrounding our school it will be safer than ever to cycle and walk to school.



Reserved Parking

Please respect the designated parking spaces available around the school. 3 additional disabled parking spaces will be available on the slip road. Following a request from the school these were included as part of the plan including the space closest to the front door of the school. These spaces have been included to ensure our school building is as accessible as possible to all. As these are located on a public road they will be monitored by an Garda Siochana and those parking without a valid permit will be subject to the relevant fines. [Click here for more information.](#)



Drive Slowly and Carefully

Drop Off and collection times can be extremely busy and stressful times for everyone. Please take care when driving near the school grounds and show courtesy to other members of our school community. We want each child to make it to school safely and relaxed.



Staff Parking Only

The Waterford ETNS car park will be for staff use only. There will be no access to the car park at drop off and collection times.

*Exception for children enrolled in our Hub Classes.

PLEASE



**NO PEANUTS
OR
NUT PRODUCTS**

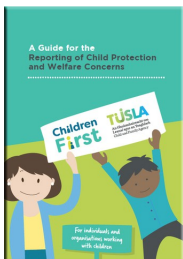
No Nuts

Due to high occurrence of nut allergies throughout our school we would ask that no child bring any nuts or products containing nuts to school. Your help keeping our pupils safe is much appreciated.



Medical Information

If your child has any medical needs or allergies please ensure that you update the child's new teacher ASAP. This can be done via their email address and a meeting can be set up if required to give further information.



Child Protection

Child Protection The school operates a Child Protection Policy under the Children First Guidelines. Anyone with concerns about the welfare of children should report directly to the Designated Liaison Person (DLP). The DLP for this school is Patrick Pender. The DDLP for this school is Dearbhail Ivin.

Before & After School Childcare (Sherpa Kids)

We are delighted to offer a **Before and After School Childcare service** on-site at Waterford Educate Together NS, provided by **Sherpa Kids**, Ireland's leading school-age childcare provider. This service runs **before school from 7:50am** and **after school until 6:00pm**, offering flexible booking options, homework support, fun activities, and healthy meals. It is designed to support families with wraparound care during the school year.

Sherpa Kids operates as a **separate, private service**, and all bookings and queries should be directed to them (full contact details included). A detailed parent information pack and booking letter are included in this welcome pack as PDFs.



Waterford Educate NS booking letter.pdf

[Download](#)

3.9 MB



sherpa-kids-2025-parent-handbook-final-version.pdf

[Download](#)

5.3 MB

Policies and Procedures Overview

Please see document below containing an overview of some of the main policies and procedures present in our school and also a list of permissions given to the school while your child is enrolled here. If you have any concerns regarding any item below, please feel free to contact the school principal.



Policies and Permissions.pdf

[Download](#)
226.8 KB

Our Fantastic Parents & Guardians Association

We are extremely lucky to have a very dedicated and active Parent's & Guardians Association here in Waterford ETNS. Many of the fantastic events we have throughout the year would not be possible without the help and support of the PA. We would encourage everyone to get involved and help in any way possible throughout the year.

The PA are organising a picnic this weekend in the People's Park. This is a fantastic opportunity for those new (and not so new) to the school community to get to know one another. Full details are on the poster below.

[Click here for Calendar of Events and to Volunteer](#)

School Supplies and Fees

There is no need to purchase any schoolbooks, workbooks, or copies this year. These have all been purchased by the school and will be given to your child free of charge under the new free schoolbooks scheme.

We ask that the stationary on your child's "booklist" (please see link below) is purchased and that every effort is made to pay the start up costs via Aladdin and where possible the financial contribution.

[School Booklists 2025/2026](#)

[Click here to access your child's supplies list for this year.](#)

Personal Pupil Accident Insurance

This optional cover is available through JF Dunne insurances and is payable in September through Aladdin Connect. Details of the insurance and how to make a claim are below.



Pupil Protection Claim Form (1).pdf

[Download](#)

230.4 KB



HOW TO MAKE A CLAIM - 2 (1).pdf

[Download](#)

429.4 KB

Lunches and Hot School Meals



No Nuts or Nut Products

Due to high occurrence of nut allergies throughout our school we would ask that no child bring any nuts or products containing nuts to school. Your help keeping our pupils safe is much appreciated.



Encourage Healthy Eating

In our school we encourage all pupils to eat healthy lunches and support this with initiatives such as our school garden, the food dudes programme etc. We ask for parents support with this.



Lunchboxes and Bottles

As a Green School it is key that we teach the children the importance of recycling and reducing our waste. Please only give your child reusable containers and bottles for lunch.

Hot School Meals Information

We are delighted with the continued success of our **Hot School Meals Programme** provided by Carambola. For those new to our school here is information about how it all works:

How It Works:

- Meals must be ordered via the **Carambola App** using your account login details. Refer to the attached setup guide if needed.
- If your child is new to the school please contact the school office for an account to be set up.
- Meals are delivered cold, reheated at school, and distributed to your child's class by teachers.

- If you do not update your child's meal order, the previous week's choice or a default meal will be provided.
- **Children should still bring a snack for first break and a drink.**

Meal Times:

- Meals are served 30 minutes before playtime:
 - **Break A:** 11:50 a.m.
 - **Break B:** 12:20 p.m.

Waste Management:

- All food waste is responsibly disposed of at school to avoid reheating risks.

Parental Queries:

- For questions, contact Carambola directly [here](#).
- Menu items and portion sizes are fixed. FAQs are attached for your convenience.

Thank you for your ongoing support in making this programme a success.



App Login Instructions (1).pdf

How to log in to the Carambola APP

Download

59.7 KB

Contact & Sales

We would love to hear from you! We always look forward to hearing from parents, students and staff in schools. We welcome your feedback and are happy to help with any queries you might have.

carambola.ie

Your Child's First Day!

Here you will find some advice for how to prepare for your child's first day at our school. This applies to all class levels, the more prepared both you and your child are for the transition the higher the likelihood of success for all!

- Have everything ready the night before to reduce last minute panic (e.g., school bag packed, clothes out, plan for breakfast).
- Leave plenty of time so you arrive a few minutes before school starts at 8.50am. This will help you and your child arrive to school relaxed.
- Reassure your child and talk about the fun they will have in school.
- Try not to let your child see if you are upset and don't hang around for too long on the first morning as this could unsettle your child.



- Make sure your child knows who will be collecting them and where.
- Take time to go through this document yourself and with your child to ensure everyone is aware of the information it contains.

Going Forward:

- If you have any concerns about your child, contact the school immediately (do not wait!). We use Aladdin Connect for all communication in Waterford ETNS. If necessary you can also arrange a meeting with the teacher.
- Attend parent and Guardian Association events and get involved in our school community. There you will learn more about us, and what you can do to support your child at home and to meet other parents.
- Arrange for your child to arrive and be collected on time. This may involve changing your daily schedule if you work or seeking support from family members/ friends



Tips for Starting School

Top Tips to Develop Your Child's Skills for school:

The more your child practices relevant skills at home the more he/she will be prepared to participate in real world situations in school. Try to introduce these skills naturally during your child's day at home.

1. Encourage self-care skills and independence: Washing hands, putting on their coat, putting on their shoes (Velcro shoes please) putting things into their bag.
2. Develop gross motor skills (using big muscles in the body): Pulling & pushing things, sports activities, obstacle courses.
3. Develop fine motor skills (using small muscles in the hands): Scissors activities, colouring, writing, lego, playdough, clothes pegs.
4. Develop their communication skills: Listening games, develop conversations with your child. •
Read with your child: Regular access to reading material as part of the daily routine.
5. Play with your child: Develop their imagination through playful activities.

To help support the transition of all children to our school we have developed the social story below. This can be accessed by clicking on the picture.



Junior Infant Parent Zoom PPT.pdf

Information from our Junior Infant information evening. (Please note not all information may be up to date).

[Download](#)
532.7 KB

School News

To keep up to date with all the latest news in Waterford Educate Together National School please follow our Instagram and Facebook pages for lots of pictures, videos and more from our school.

<https://www.instagram.com/waterfordetns/>

[instagram.com](#)



Waterford Educate Together National School

Waterford Educate Together National School. 57 likes · 1 talking about this. Welcome to our schools Facebook page. Here you will find updates, pictures, news and all things Waterford Educate Together...

[facebook.com](https://www.facebook.com)



Patrick Pender

Waterford ETNS Principal

Contact

Subscribe

